

WELCOME



Introducing De Vere Wokefield Estate.
Here, an exquisitely restored country
mansion, filled with character and
charm, meets a newly-refurbished events
centre with state-of-the-art facilities.

Before you even get inside it's walls, it's easy to see why this venue is special. Set amongst 250 acres of parkland, there are manicured lawns to explore, and lakeside views to enjoy. Inside, following a £20 million investment, there's a choice of 34 impressive meeting rooms, equipped with every necessity. Business meetings are given a lift, and team building exercises have a buzz from start to finish, not least from our very own high ropes course.

This is a place where old and new are celebrated in equal measure, creating a truly unique venue. We can't wait to share it with you, whatever your event.

Welcome.

LAURIE NICOL

Chief Operating Officer

SMART SPACE

— MEETINGS —

We're proud to introduce Smart Space, our new meetings and events service like no other. Available at De Vere properties right across the country, it's been meticulously crafted to create unforgettable events. So, whether you want a unique venue in the country or the city, you'll experience exceptional service every time.

SHOWTIME

— REWARDS —

Showtime is our way of saying thank you for your conference, training and events business. For every enquiry, you'll receive a free Odeon cinema ticket (two if you're a corporate booker). Plus, if you hold your event with us, you'll earn points to spend at top high street stores like John Lewis.

SIGN UP FOR FREE AT SHOWTIME-REWARDS.CO.UK

DE VERE WOKEFIELD ESTATE

+44 (0) 871 222 4828

wokefieldconference@devere.com

CONFERENCE & BANQUETING



MANSION HOUSE TERRACE



ADAM

DE VERE WOKEFIELD ESTATE



The Wokefield Mansion House

WITH SUCH RICH HISTORY WITHIN ITS WALLS, THE WOKEFIELD MANSION HOUSE NEVER FAILS TO CREATE UNIQUE AND MEMORABLE EVENTS.

Made up of stunning suites and full of original features, the Mansion House offers a range of sophisticated spaces for senior level meetings and exclusive events, as well as the 1560 restaurant and unique event spaces offering private dining. Its recent £20 million restoration has transformed all rooms to their former glory. Striking original features have been restored, including grand ceilings and traditional fireplaces, and beautiful modern touches have been added throughout.

THE WOKEFIELD MANSION HOUSE

- Picturesque lawns overlooking the lake
- 17th-century period features
- Unique features in the Whisky Lounge
- 1560 Restaurant
- Superfast Wi-Fi up to 500Mb
- Max. capacity: 300



TEAM BUILDING



MANSION HOUSE



RECEPTION

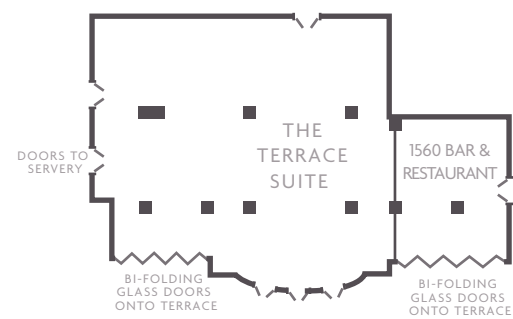


The Terrace Suite

THE STUNNING TERRACE SUITE IS OUR MAIN CONFERENCE AND EVENT SPACE. SITUATED IN OUR 17TH-CENTURY MANSION HOUSE WITH ITS OWN PRIVATE TERRACE, YOU CAN EXPECT IMPRESSIVE VIEWS BOTH INSIDE AND OUT.

Ideal for large conferences and banqueting events, this space is light, airy and inviting. With its adjoining outside terrace, guests are offered a place to break out and take in the views that surround them. One of our most impressive spaces, and one that's certain to add a sense of sophistication to any event.

For full dimensions and capacity details please see page 22.



THE TERRACE SUITE

- Access to grounds
- Full of natural daylight
- Versatile space
- Terrace with access onto the manicured lawns
- Bar nearby
- Air-conditioning
- Superfast Wi-Fi up to 500Mb
- Max. capacity: 300

THE TERRACE SUITE





THE LINCOLN SUITE

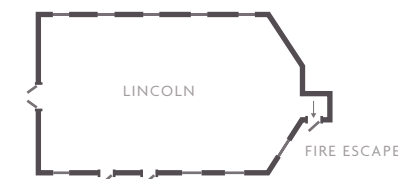


The Lincoln Suite

WITH ORIGINAL CHARM, NATURAL LIGHT IN ABUNDANCE AND STUNNING LAKESIDE VIEWS, THIS IS ONE SPACE WITH PLENTY TO OFFER.

The historic Lincoln Suite has been lovingly rejuvenated, combining exquisite features with the latest in audiovisual technology. It's a space perfect for conferences and private dining alike. We cater for everything, from elegant afternoon teas to exquisite barbecues, thanks to the easily accessible lakeside lawns just outside.

For full dimensions and capacity details please see page 22.



THE LINCOLN SUITE
 Natural daylight
 Beautiful views across the lawns
 Traditional setting
 Access to grounds
 Superfast Wi-Fi up to 500Mb
 Max. capacity: 120



THE OLD LOUNGE



The Old Lounge

IF YOU'RE LOOKING FOR A SPACE THAT WILL MAKE AN IMPRESSION, IT DOESN'T GET MUCH BETTER THAN BEAUTIFUL CEILINGS, INCREDIBLE LAKESIDE VIEWS AND TRADITIONAL FIREPLACES.

Filled with natural light and exquisite features, The Old Lounge gives any meeting a sense of gravitas. When guests are ready to re-energise, we host breakout sessions inspired by Group Nutritionist, Wendy Martinson, OBE. This space has as much to offer outside as it does inside; with easy access to the lakeside, guests can enjoy a break with a view.

For full dimensions and capacity details please see page 22.



THE OLD LOUNGE
 Full of natural daylight
 Versatile space
 Ornate traditional features
 Connected to the Palmer Suite
 Superfast Wi-Fi up to 500Mb
 Max. capacity: 50



WOKEFIELD PLACE ENTRANCE



WOKEFIELD SUITE



SKY 3



THE VIEW RESTAURANT



Wokefield Place

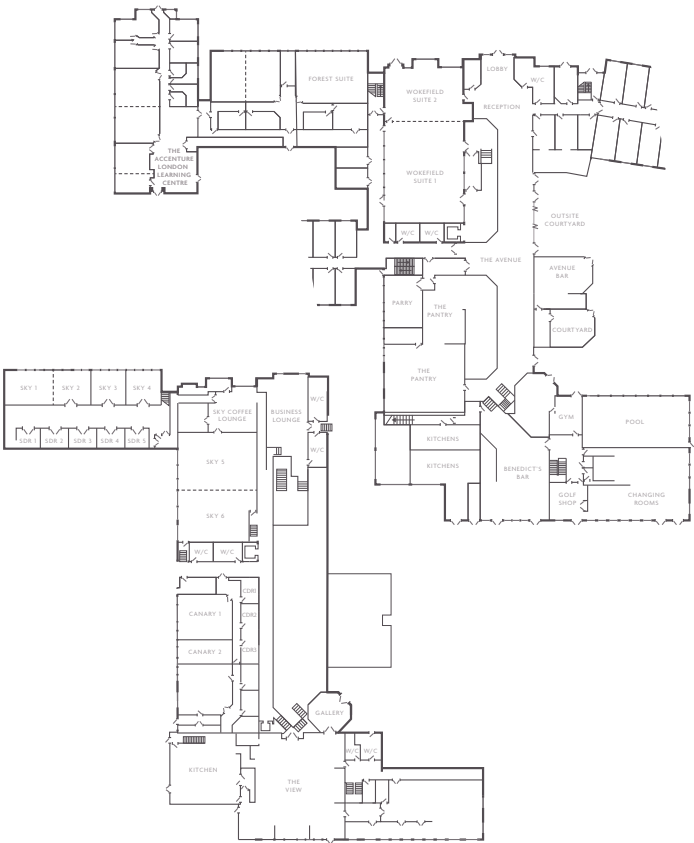
IT IS HERE THAT YOU'LL DISCOVER THE VENUE'S CONTEMPORARY SIDE. WOKEFIELD PLACE IS A BEAUTIFUL, NEWLY-REFURBISHED CENTRE DESIGNED TO BLEND EFFORTLESSLY WITH THE RICH HERITAGE OF THE MANSION HOUSE.

State-of-the-art technology and modern luxuries combine to create a range of exciting meeting rooms and collaborative workspaces. Guests have access to The View restaurant and Benedict's Bar and The Avenue – a spectacular space that brings the outdoors in, showcasing indoor trees, plants and huge windows.

For full dimensions and capacity details please see page 22.

WOKEFIELD PLACE

- 25 meeting rooms
- Natural daylight
- Latest audiovisual equipment
- Air-conditioning
- Superfast Wi-Fi up to 500Mb
- Max. capacity: 500
- The Avenue
- Benedict's Bar
- The View restaurant



WOKEFIELD PLACE

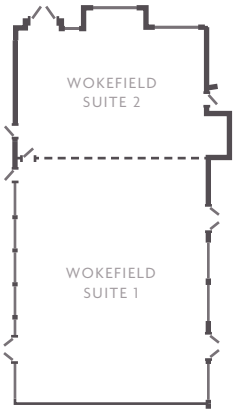


Wokefield Suite

EQUIPPED WITH LARGE BUILT-IN SCREENS, CEILING PROJECTORS AND THE LATEST IN AV SYSTEMS, THIS FLEXIBLE SPACE HAS EVERYTHING A SUCCESSFUL EVENT NEEDS. AND MORE.

This fresh and contemporary space is situated on the ground floor of the newly-refurbished Wokefield Place. Air-conditioning and natural light fills the room creating a bright and positive atmosphere, and guests can be lead straight in from The Avenue where we serve tea and coffee on arrival. It's a space that's ideal for conferences because of our impressive breakout sessions inspired by Group Nutritionist, Wendy Martinson, OBE.

For full dimensions and capacity details please see page 22.



- WOKEFIELD SUITE
- Ground floor
- Natural daylight
- Built-in audiovisual equipment
- The View restaurant
- Superfast Wi-Fi up to 500Mb
- Max. capacity: 500 theatre-style with tiered seating

WOKEFIELD SUITE





SKY 5 & 6



The Sky Suites

FLEXIBILITY IS THE OPERATIVE WORD IN THIS MODERN, BRIGHT AND AIRY SUITE. VIRTUALLY ANY SMALL OR MEDIUM-SIZED EVENT IS EASILY ACCOMMODATED.

Located on the first floor of Wokefield Place, The Sky Suites offer everything you expect of a modern events space. Awash with natural daylight and equipped with the latest amenities, every need is catered for. Depending on the nature of your event, we can even split the suite into two sections. As a combined space, up to 200 can be seated in a theatre-style arrangement or 120 in a cabaret.

For full dimensions and capacity details please see page 22.



THE SKY SUITE
First Floor
Natural daylight
Situating in Wokefield Place
Four further Sky meeting rooms
Superfast Wi-fi up to 500Mb
Max capacity: 200 theatre-style



THE BUSINESS LOUNGE



Business Lounge

CHARACTER MEETS COMFORT IN OUR OPEN AND INVITING BUSINESS LOUNGE. A STRIKING SPACE ON THE FIRST FLOOR OF WOKEFIELD PLACE.

From the classic wood-panelling to the cosy armchairs, the delicate hanging bulbs to the distinctive arched windows, our Business Lounge provides an inspirational breakout area for events at Wokefield Place. Also available as a syndicate space for meetings taking place throughout the building, you'll be just a short walk from The View restaurant where you can make use of the tea/coffee & snack station.

For full dimensions and capacity details please see page 22.



THE BUSINESS LOUNGE
First Floor
Natural daylight
The View restaurant
Situating in Wokefield Place
Superfast Wi-fi up to 500Mb

BANQUETING



Whether something refined,
or a little more casual is in
order, here we can cater for
your every need.

Before you choose from our seasonally crafted menus,
you must first decide where you want to hold your dining
experience. For something more traditional, there's our
à la carte menu, which you can enjoy al fresco or served within
the elegant Mansion House. Alternatively, guests can opt
to dine at Wokefield Place, where they can enjoy a variety
of buffet options in a contemporary and inspiring setting.



PALMER SUITE SET UP
FOR BANQUETING



Bedrooms

ALL OF OUR ROOMS HAVE BEEN SPECIALLY DESIGNED TO OFFER YOU A WELCOMING SPACE TO UNWIND. JUST WHAT YOU NEED AFTER A PRODUCTIVE DAY.

We have a variety of accommodation, whether you're looking to rest your head in a simple and classic room, or want to go for something more luxurious. Each bedroom provides everything you need to make yourself at home, from tea and coffee and complimentary superfast Wi-Fi to flat screen TVs.

GUEST ROOMS

Bright, airy and spacious, our Guest rooms in Wokefield Place and Wellington Lodge have been recently refurbished and are classically styled to provide you with comfort throughout your stay.

SUPERIOR

Located in the Mansion House, our Superior rooms are designed with comfort in mind and give a spacious feel.

MANSION HOUSE SUITES

Our Mansion House Suites are the perfect treat. With beautiful views, every room is rich in heritage with a modern and sophisticated feel to blend beautifully with the Mansion House's history.

Whilst all of them are generous in size with touches of luxury throughout, each one is slightly unique. Some benefit from a separate lounge area whilst others have an open plan layout.



MANSION HOUSE SUITE



WELLINGTON LODGE BEDROOM



WOKEFIELD PLACE STANDARD ROOM



MANSION HOUSE TRADITIONAL DELUXE ROOM



BENEDICT'S BAR



ACTIVITY COURSE



OUTDOOR EXPLORING



SWIMMING POOL



WHISKY LOUNGE



GOLF COURSE



MANSION HOUSE



1560 RESTAURANT



THE VIEW RESTAURANT

LEISURE



After a hard day's work,
it's only right you take a little
time to unwind.

Head over to our championship golf course, featuring a new driving range with 15 fully floodlit bays, de-stress in our gym, re-energise with a few lengths in our pool or just relax in our restaurants and bars.

Plus, with Hunter wellies to borrow at any time, you can make the most of your stunning surroundings with a lakeside stroll. After all, who says you can't mix business with pleasure?

Or for a great teambuilding session, try a high ropes course with our partners Grahame Robb Associates and Hi 5 to add an extra dimension to your event.



Capacities

ROOM NAME	DIMENSIONS L X W X H (M)	FLOOR SPACE (M ²)	THEATRE	CLASS ROOM	BOARD ROOM	U-SHAPE	CABARET (10)	BANQUET	HERRINGBONE	HORSESHOE
Lincoln	14.6 x 9.7 x 3.43	143.72	120	40	42	32	100	120	60	50
Palmer	11.4 x 8.0 x 4.3	95.12	60	18	28	20	50	60	25	30
Mortimer	10.9 x 5.9 x 4.2	74.00	50	20	26	18	40	50	24	25
Old Lounge	10.8 x 5.8 x 4.5	72.52	50	18	26	18	40	40	24	25
Boardroom	5.4 x 5.4 x 4.2	29.16	x	x	8	x	x	10	0	0
Adam	5.7 x 6.0 x 4.2	34.20	x	x	12	8	x	12	0	0
Huntley	5.0 x 4.1 x 4.2	20.50	x	x	8	x	x	10	0	0
Terrace Suite	28.6 x 17.3 x 2.7	368.49	250	50	x	50	200	300	N/A	N/A
Wokefield Suite	27.0 x 13.5 x 4.0	x	500*	200	x	x	270	300	200	x
Canary	12.0 x 9.0	108	60	30	30	35	40	N/A	N/A	N/A
Forest	12.0 x 9.0	108	90	50	40	30	60	x	N/A	N/A
Sky 5 & 6	18.8 x 13.0	360	200	80	65	60	150	150	N/A	N/A

Please note that the Terrace capacities above allow space for repeater screens when set in either theatre or cabaret. All other capacities above show the maximum number of delegates in the spaces without staging, dance floor space or other furniture which would reduce the figures.

*Wokefield Suite Theatre seats 500 with tiered seating.

Finding us

We're easy to reach by car by exiting the M4 at Junction 11, or the M3 at Junction 5.

If you're arriving by train, we're just seven miles from Reading Station, where there are trains every 30 minutes connecting with Mortimer Station. It is necessary to book a taxi from the train station to the hotel.

And if you're flying, we're just 36 miles from London Heathrow Airport.

DE VERE WOKEFIELD ESTATE

Goodboys Lane, Mortimer,
Reading RG7 3AE
+44 (0) 871 222 4828
wokefieldconference@devere.com

DEVERE.COM/
DEVEREWOKEFIELDESTATE



LOOKING FURTHER AFIELD?

With country estate hotels and event centres across the UK, we're sure to have the space you've been searching for.

Find out more at devere.com